



WBK11A™

8-Channel Simultaneous Sample & Hold Card



Compatibility: ✓ WaveBook ✓ WBK10A

Features

- Provides eight input channels with simultaneous sample and hold
- Samples all channels within 100 ns of one another
- Expands the WaveBook's gain sensitivity

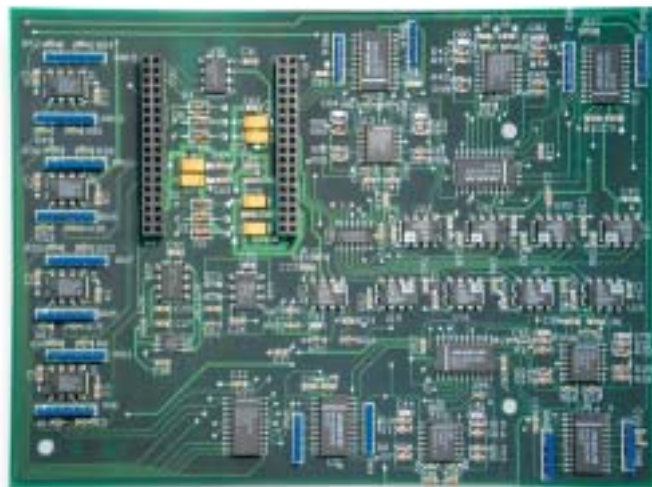
The WBK11A™ is an 8-channel simultaneous sample and hold card for use with the WaveBook™ portable data acquisition systems. The card installs* directly into the WaveBook or WBK10A™ analog input chassis, enabling the simultaneous sampling of all channels**. Even if multiple WBK11A cards are installed within one system, all system channels are sampled within 100 ns of one another.

Simultaneous sampling of all channels occurs at the start of a scan sequence. The system then scans the output of each sample and hold amplifier until all channels are measured.

Programmable Gain Amplifiers. With the WBK11 installed in the WaveBook and WBK10A, gain ranges are shifted upward automatically to include the ±10V range of these products.

Note: When installed in a WaveBook, the 20-kHz low-pass filter is disabled.

The WBK11A simultaneous sample and hold card provides the Wavebook with eight channels of simultaneous sample and hold capability



Ranges with Installation of WBK11A		
Range	WaveBook	WBK10A
Bipolar	±10V, ±5V, ±2V, ±1V ±0.5V, ±0.2V, ±0.1V	±10V, ±5V, ±2V, ±1V ±0.5V, ±0.2V, ±0.1V, ±0.05V
Unipolar	Not Available	0 to +10V, 0 to +5V, 0 to +2V, 0 to +1V, 0 to +0.5V, 0 to +0.2V, 0 to +0.1V

Specifications

Connectors: Internal to the WaveBook (36-pin sockets mate with 36-pin connectors)
Channels: 8
Input Voltage Ranges: Software programmable prior to a scan sequence, see table above
Programmable Gain Amplifier
Gain Ranges: x1, 2, 5, 10, 20, 50, & 100
Accuracy (typ):
 With /516A: ±0.012% of reading; ±0.008% of range
 With /512A: ±0.03% of reading; ±0.012% of range
CMRR: 80 dB typ
Aperture Uncertainty: 75 ps max
Voltage Droop: 0.01 mV/ms max
Weight: 0.14 kg (0.3 lbs)
Power: Derived from WaveBook or WBK10A; draws 0.227 @ 15V

Ordering Information

Description 8-channel sample and hold card for the WaveBook or WBK10A	Part No. WBK11A
---	---------------------------

For complete information on accessories and cables, visit www.iotech.com/acc

Related Products

WaveBook Series	p. 17
WBK10A	p. 35

* Must be factory installed and calibrated

** When using a WaveBook system with a WBK11A, WBK13A, WBK16/SSH, or WBK18 the per channel sample rate is $\frac{1 \text{ MHz}}{(n + 1)}$ where n=number of active channels